



ROOT ELEVATORS

LEVE PER RADICI



680/1 Bein mm 2 Round Tonda	680/2 Bein mm 3 Round Tonda	680/3 Bein mm 4 Round Tonda	680/4 Bein mm 2 Flat Piatta	680/5 Bein mm 3 Flat Piatta	680/6 Bein mm 4 Flat Piatta	680/7 White mm 4	680/8 White mm 4	690/4 Flohr mm 3	690/7 Flohr mm 3 Flat Piatta	690/8 Flohr mm 3 Flat Piatta	



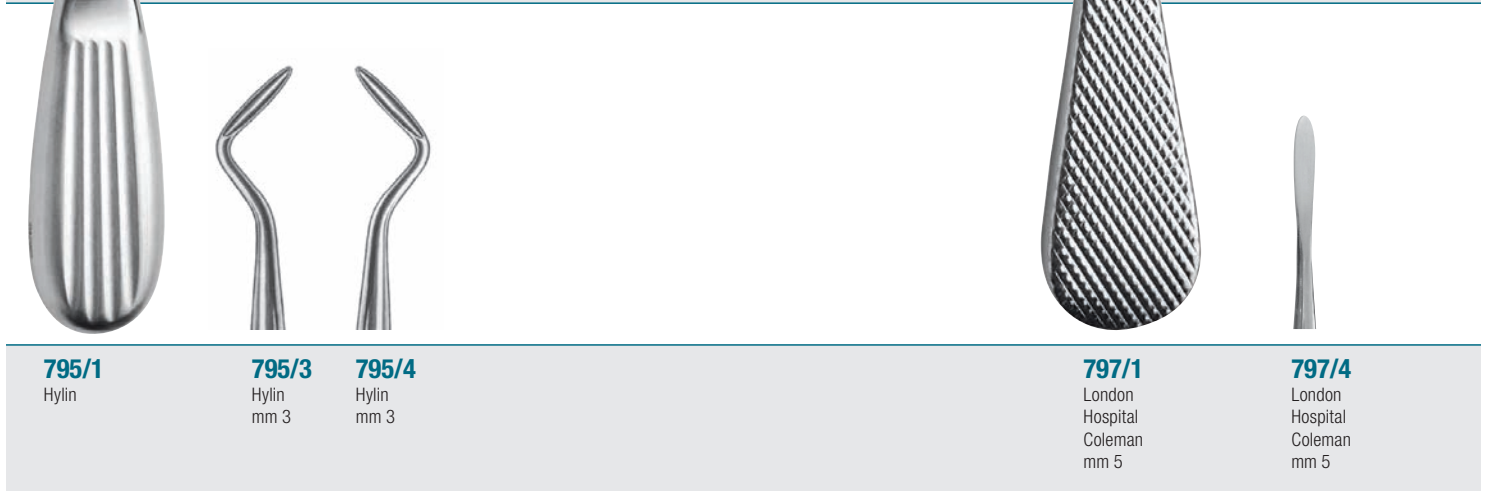
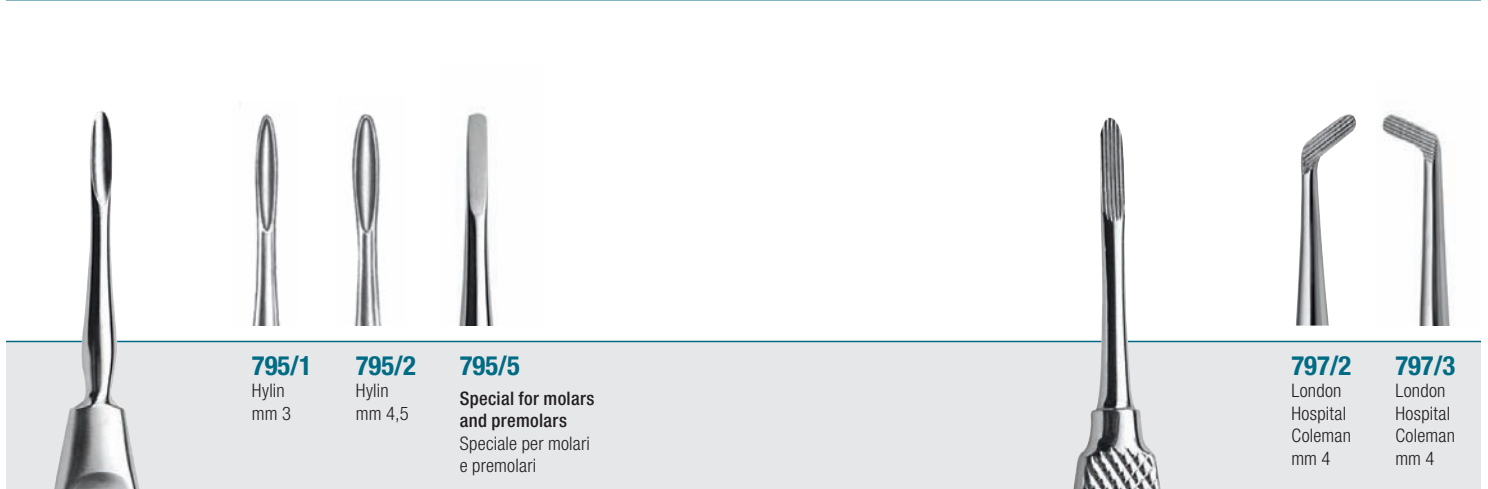
680/1	680/9 Berten mm 5 Lower roots Radici inferiori	680/11 mm 3	680/12 mm 3	680/13 mm 3	680/14 mm 3	690/3 Flohr mm 3	690/5 Cryer	690/6 Cryer
--------------	--	-----------------------	-----------------------	-----------------------	-----------------------	-------------------------------	-----------------------	-----------------------

720/4 Apical 304 mm 3	720/5 12 A mm 3	720/6 34 S mm 4	720/7 Seldin mm 5,2	720/8 mm 3,2	720/9 Flohr mm 4,2	720/15 Seldin mm 3,5	726/2 S mm 2,5	726/3 S mm 3	726/4 S mm 3,5	



720/1 Apical 301	720/2 Apical 302 mm 2,5	720/3 Apical 303 mm 2,5	720/10 Flohr mm 3	720/11 Flohr mm 3	726/1S mm 2	726/5 S mm 4	726/6 S mm 4,5
----------------------------	--------------------------------------	--------------------------------------	--------------------------------	--------------------------------	-----------------------	------------------------	--------------------------

SURGICAL / CHIRURGIA

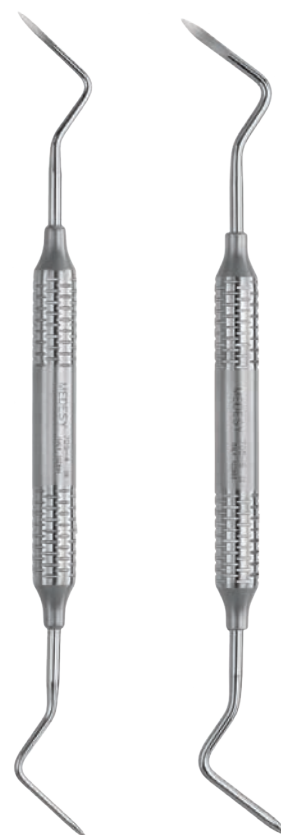




ø mm 1,5



ø mm 2,5



705/7
Heidbrink
ø mm 1,5

705/8
Heidbrink
ø mm 1,5

705/9
Heidbrink
ø mm 1,5

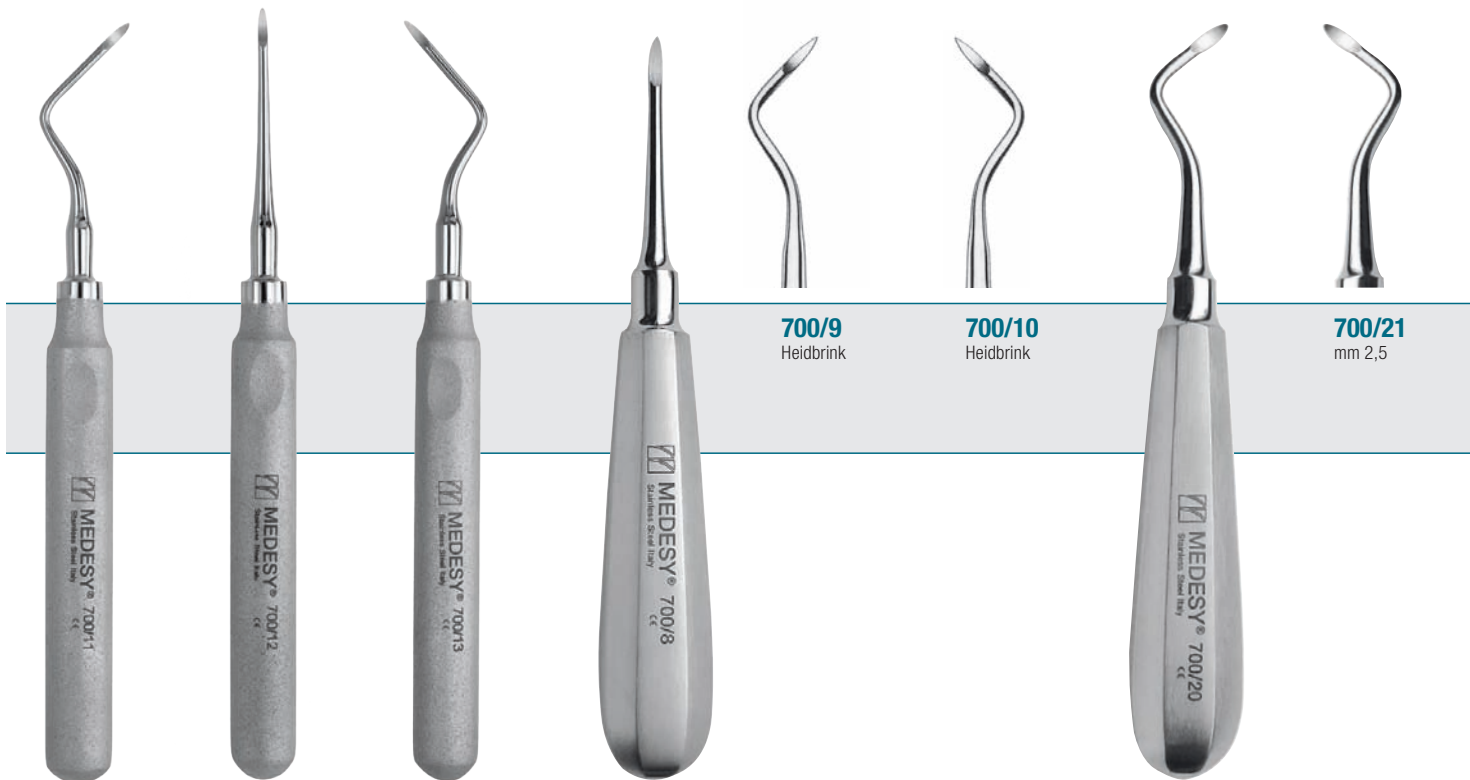
705/1
Heidbrink
ø mm 2,5

705/2
Heidbrink
ø mm 2,5

705/3
Heidbrink
ø mm 2,5

705/4
Heidbrink Apical
ø mm 1,5
10 mm hollow handle
10 mm manico vuoto

705/6
Howard Apical
ø mm 2,5
10 mm hollow handle
10 mm manico vuoto



700/9
Heidbrink

700/10
Heidbrink

700/21
mm 2,5

700/11
Heidbrink
ø mm 2,5
14 mm hollow handle
14 mm manico vuoto

700/12
Heidbrink
ø mm 2,5
14 mm hollow handle
14 mm manico vuoto

700/13
Heidbrink
ø mm 2,5
14 mm hollow handle
14 mm manico vuoto

700/8
Heidbrink

700/20
mm 2,5



796/1 (mm 150)
Warwick-James
mm 2,2



796/2
Warwick-James
mm 2,2



796/3
Warwick-James
mm 2,2



728/1
Friedman



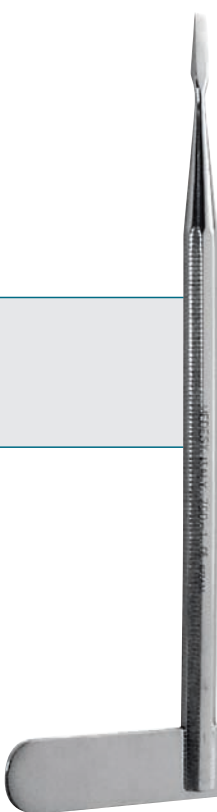
728/2
Friedman



681/1
mm 3,5



681/2
mm 4,5



700/1 (mm 130)
mm 2,0

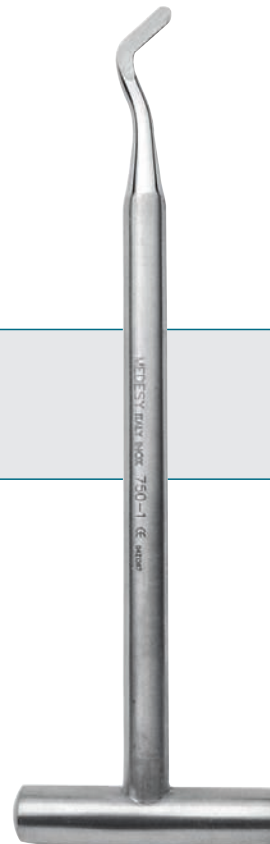


700/2
mm 4,0



700/3
mm 3,0

Angled Bayonet
A baionetta



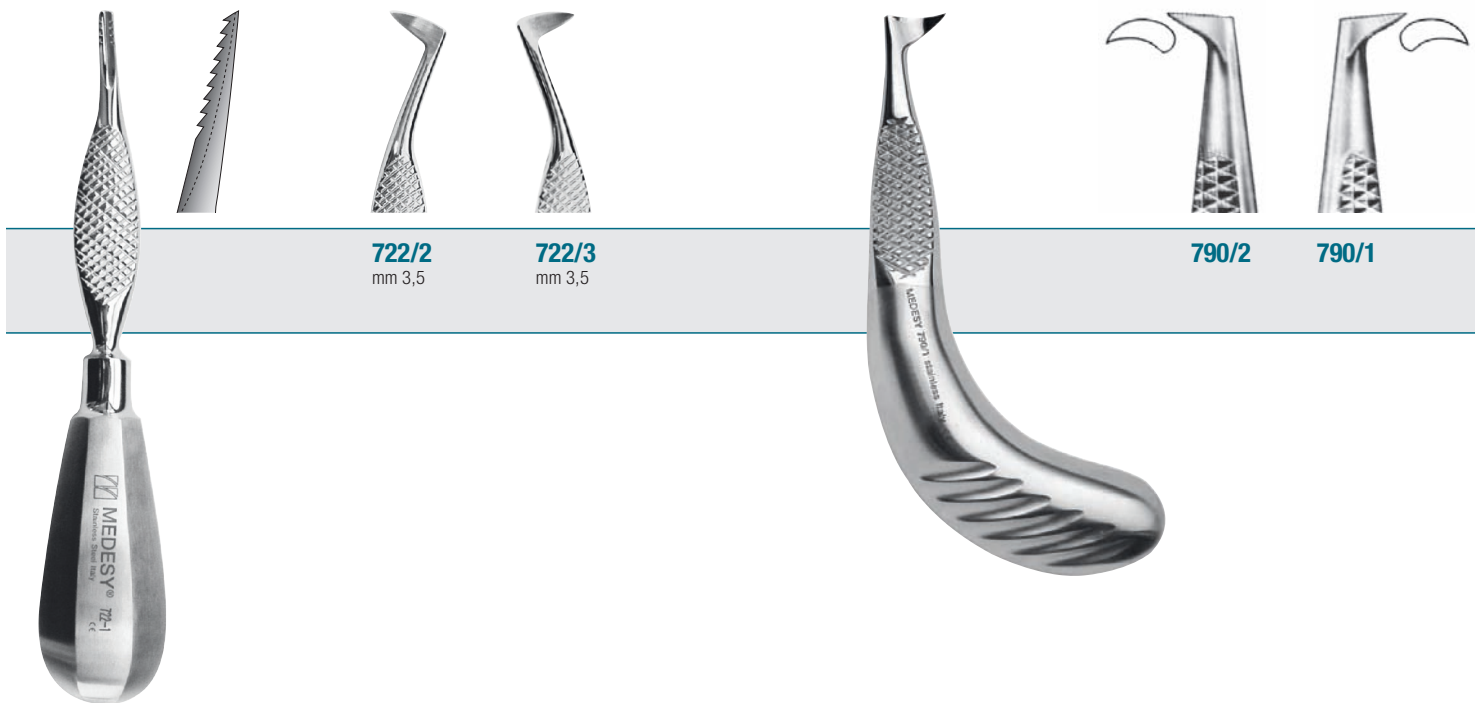
750/1 (mm 150)
POTT
mm 3



750/1
POTT
mm 3



750/2
POTT
mm 3



722/2
mm 3,5

722/3
mm 3,5

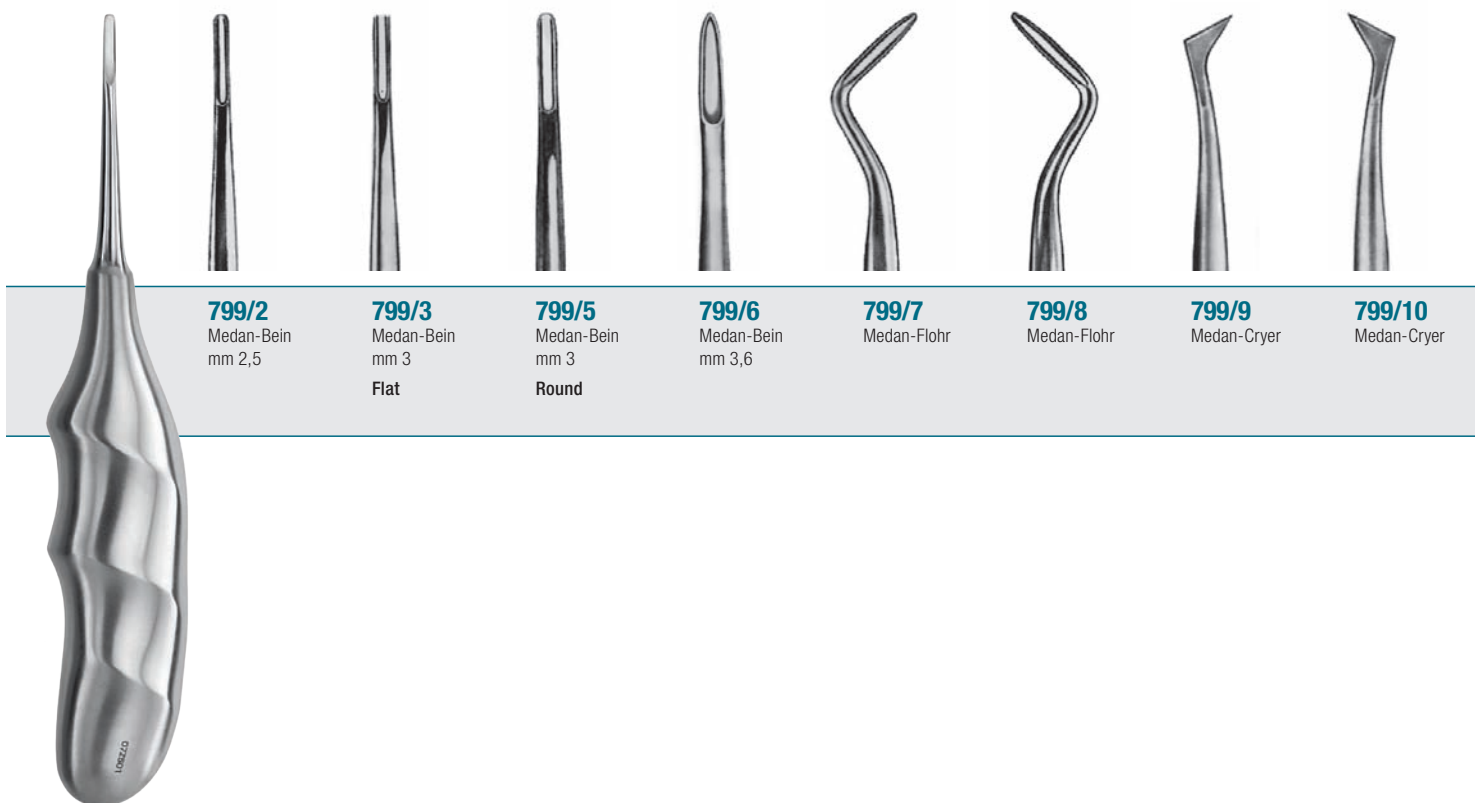
790/2

790/1

722/1
mm 3,5

790/1

Molars roots
Leve per radici dei molari



799/2
Medan-Bein
mm 2,5

799/3
Medan-Bein
mm 3
Flat

799/5
Medan-Bein
mm 3
Round

799/6
Medan-Bein
mm 3,6

799/7
Medan-Flohr

799/8
Medan-Flohr

799/9
Medan-Cryer

799/10
Medan-Cryer

799/2

Anatomic handles
Manici anatomici



780/1
W. Barry

780/2
W. Barry

780/3
W. Barry

780/4
W. Barry



780/1 (mm 125)
W. Barry

770/1
Lecluse



785/1L
Winter

785/1R
Winter

785/11L
Winter

785/11R
Winter

785/12L
Winter

785/12R
Winter



785/1L (mm 125)
Winter



“ MEDESYS IN SPOT

*The right way to hold the
Winters and Barry elevators,
for a perfect use.*

*La giusta impugnatura delle Winters
e Barry, per un utilizzo perfetto. ”*

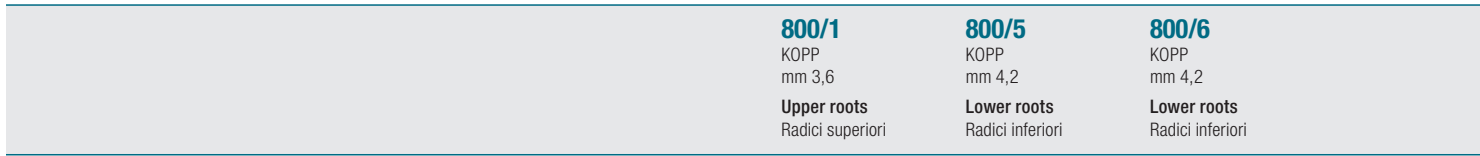
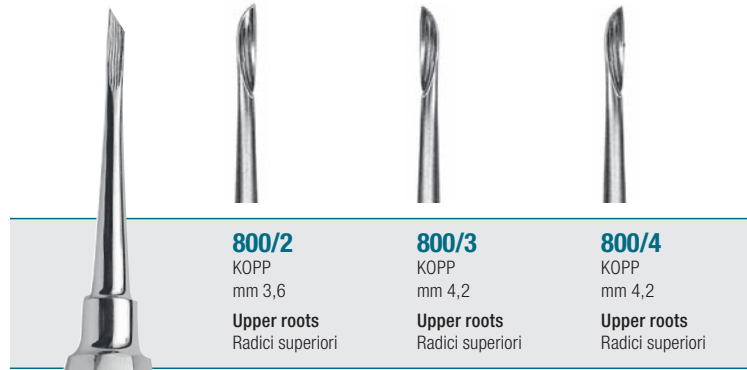
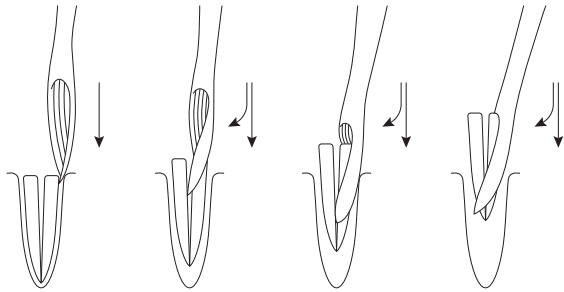
KOPP ROOT ELEVATORS

It easily distinguishes itself by a helical groove on the inner surface of the tip. Due to its eccentric form, results easy the penetration in the gap between the tooth and its bone and now, using a moderate pressure in vertical direction and contemporary moving the elevator in a circular course, the root is extracted.



LEVE PER RADICI "KOPP"

Si distinguono facilmente grazie alla forma elicoidale delle punte e della zigrinatura interna alla scanalatura. La penetrazione della punta fra il dente e l'alveolo è facilitata dalla forma eccentrica della stessa e quindi, con una moderata pressione in senso verticale e nello stesso tempo muovendo la leva in senso circolare, si otterrà, simultaneamente, l'effetto di smuovere ed estrarre la radice dal suo alveolo.





ROOT ELEVATORS APEXO

LEVE PER RADICI APEXO

730/301

(1:1 scale / Scala 1:1)



730/301

Apexo
mm 2,5x9,0

Straight
Retta

730/302

Apexo
mm 2,7x9,0

Straight
Retta

730/303

Apexo
mm 3,0x9,0

Straight
Retta

730/304 W

Seldin
mm 3,0x14,0

Straight
Retta



730/301 CB

Apexo
mm 2,5x9,0

Curved
Curva

730/302 CB

Apexo
mm 3,0x9,0

Curved
Curva



735/Set APEXO

ROOT ELEVATORS LUSSATORE

LEVE PER RADICI LUSSATORE



730/4S
(1:1 scale / Scala 1:1)



730/3 S
Lussatore
mm 3
Straight
Retta

730/3 C
Lussatore
mm 3
Curved
Curva

730/4 S
Lussatore
mm 4
Straight
Retta

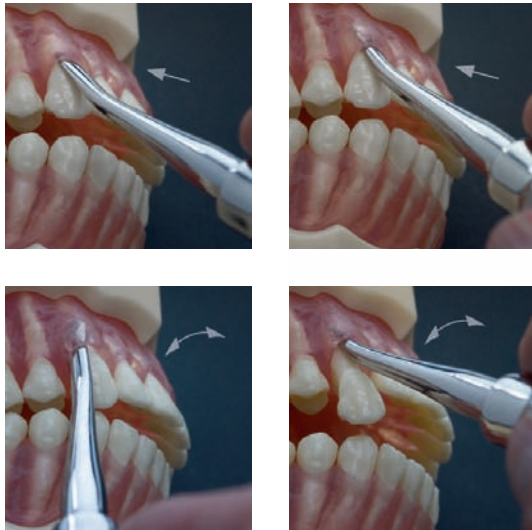
730/4 C
Lussatore
mm 4
Curved
Curva

730/5 S
Lussatore
mm 5
Straight
Retta

730/5 C
Lussatore
mm 5
Curved
Curva

Elevators with sharp and thin blades, allows a gentle penetration, cutting the periodontal ligaments. Thanks to its form, the widening of the alveole become easy, reducing the use of tooth forceps.

Leva che possiede una lama estremamente piatta e tagliente, permette una precisa penetrazione e taglio del ligamento periodontale. Il vantaggio del Lussatore risiede nella diminuzione dei traumi esercitati sui denti e gengive ed in molti casi vanifica la necessità dell'uso delle tenaglie per estrazione.



730/Set
LUSSATORE



ROOT ELEVATORS LINDO LEVIAN

LEVE PER RADICI LINDO LEVIAN

725/1 LLL
(1:1 scale / Scala 1:1)



725/1 LLL

Lindo Levian
mm 4x8

Straight
Retta

725/2 LLM

Lindo Levian
mm 3x8

Straight
Retta

725/3 LLS

Lindo Levian
mm 2,5x5

Straight
Retta

725/4 LLLC

Lindo Levian
mm 4x8

Curved
Curvo

725/5 LLMC

Lindo Levian
mm 3x8

Curved
Curvo

725/6 LLSC

Lindo Levian
mm 2,5x5

Curved
Curvo

SERRATED TIPS PUNTE ZIGRINATE



Thanks to the serrated tips, this elevators doesn't need any leverage movement. By pulling the elevator between the alveolus and root, and then making a slight rotary movement, the root arise easily.

Grazie alle punte zigrinate, si può ottenere l'estrazione della radice escludendo il classico effetto leva. La punta va inserita tra alveolo e radice.



725/Set
LINDO LEVIAN

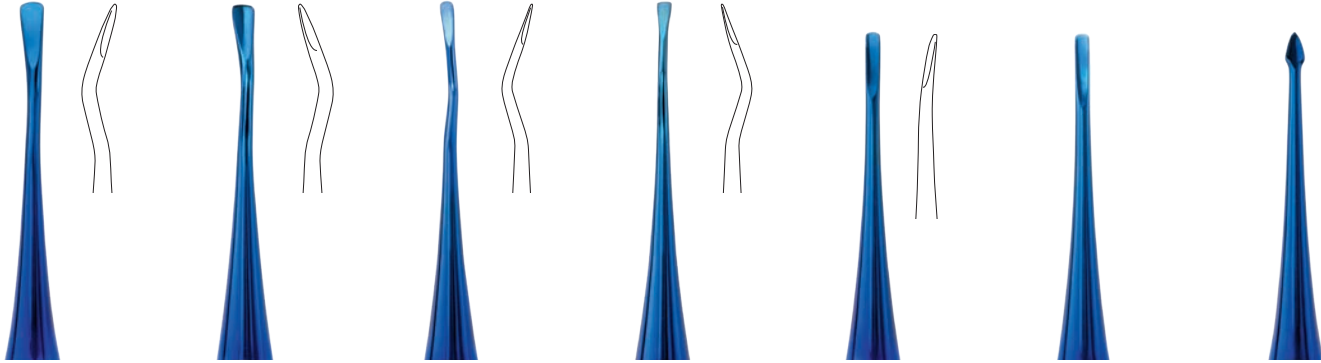
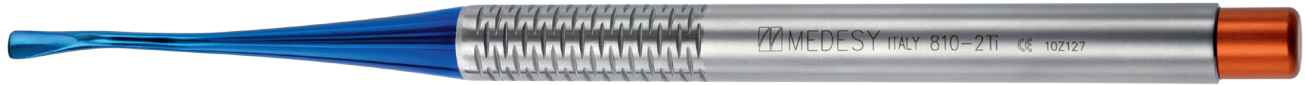


ROOT ELEVATORS *MIDELUX*

LEVE PER RADICI *MIDELUX*



810-2Ti
(1:1 scale / Scala 1:1)



810-1Ti

Distal, mm 4

Micro edge
Micro dentata

810-2Ti

Mesial, mm 4

Micro edge
Micro dentata

810-3Ti

Distal, mm 2,5

Micro edge
Micro dentata

810-4Ti

Mesial, mm 2,5

Micro edge
Micro dentata

810-5Ti

mm 2,5

Micro edge, curved
Micro dentata, curva

810-6Ti

mm 2,5

Micro edge, straight
Micro dentata, retta

810-7Ti

mm 3,4

Straight
Retta

Midelux, pretty small elevators available in 3 different measures, focused on loosening teeth in a simple way. The luxation of teeth results easy and quick, due to the specific form developed, mesial and distal. General use of Midelux with small size, specific use with large tips of 4 mm, for molars. The set is completed with an arrow tip for detaching desmodontal fibres. All tips are stainless steel and blue titanium coated.

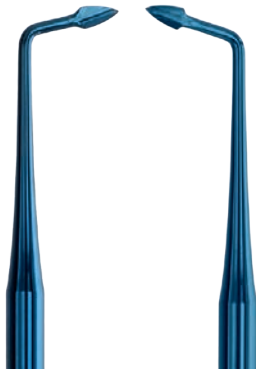
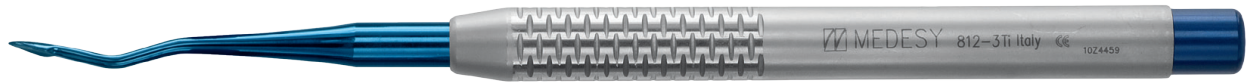
Midelux, piccole leve disponibili in 3 differenti misure, finalizzate all'allentamento dei denti in modo semplice. La lussazione risulterà quindi facile e veloce, grazie alla forma specificatamente sviluppata, mesiale e distale. Utilizzo generale delle leve Midelux con misura piccola, utilizzo specifico con molari, attraverso la misura larga di 4 mm. Il set si completa con una speciale punta a freccia per rimuovere i tessuti molli. Gli strumenti hanno le punte ricoperte al titanio.



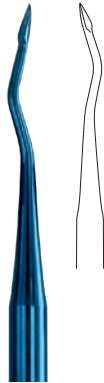
810/Set

Contains: 7 mini elevators on tray 980
Contiene: 7 mini lussatori in vassoio 980

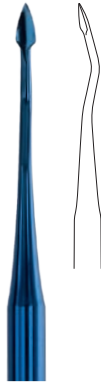
812-3Ti
(1:1 scale / Scala 1:1)



812-1Ti
mm 3,4
Left
Sinistra



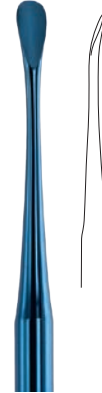
812-2Ti
mm 3,4
Right
Destra



812-3Ti
mm 3,4
External
Esterna



812-4Ti
mm 3,4
Internal
Interna



812-5Ti
mm 4,5
Internal
Interna



812-6Ti
mm 4,5
External
Esterna



812-7Ti
mm 3,4
Straight
Retta

812/Set
Contains: 7 mini
elevators on tray 980
Contiene: 7 leve
in vassoio 980



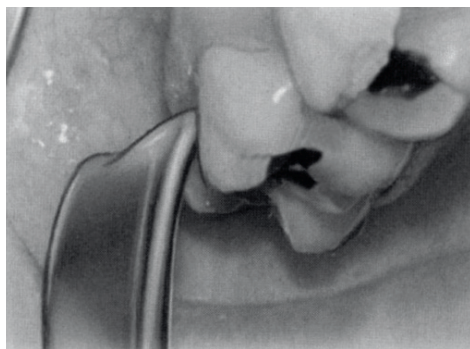
Recent developments in implantology have opened new horizons, for example the change of an immediate extraction/implantation. But to do that, you need the appropriate instruments. The new MEDIMPLA Medesy root elevators, are made expressly to improve your performance. The insertion of MEDIMPLA elevators into the intraligamental zone, is made easier to an extremely sharpness and perfect bending, of working part of the gauge. All this, has been studied to guarantee a less traumatic extraction as possible, which allows to preserve the alveolar site, in perfect conditions. The special pen form, assure very delicate movements. All tips are stainless steel and blue titanium coated.

Recenti sviluppi in implantologia hanno aperto numerosi orizzonti, ad esempio la possibilità di estrazione/implantazione immediata. Ma per far ciò è indispensabile disporre degli strumenti adeguati. La nuova gamma MEDIMPLA di Medesy vi aiuta in quest'ottica. L'inserimento della leva MEDIMPLA nel sito intraligamentale, risulterà facilitato grazie ad una estrema finezza e particolare curvatura dello strumento stesso. Tutto ciò al fine di garantire un'estrazione più atraumatica possibile, che permette quindi di conservare il sito alveolare in perfette condizioni. La speciale forma "a penna", assicura movimenti particolarmente delicati. Gli strumenti hanno le punte ricoperte al titanio.

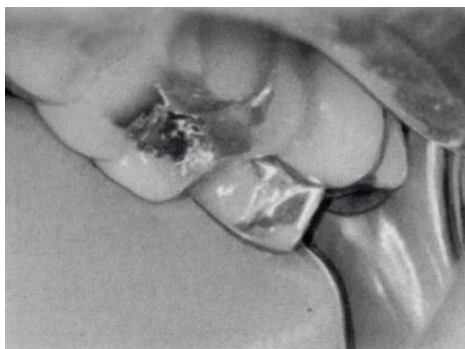


LUSSATORE LEVER FOR UPPER WISDOM TEETH

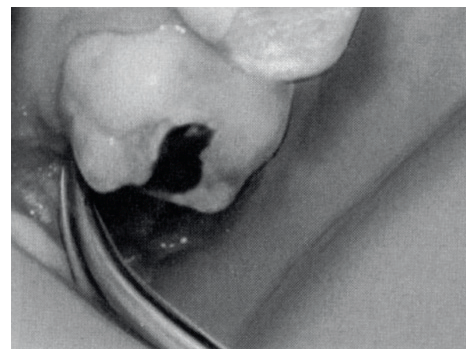
LEVA D'ESTRAZIONE PER IL DENTE DEL GIUDIZIO SUPERIORE



We start separating the buccal and palatal gingiva.
Si inizia separando la gengiva vestibolare e palatale.



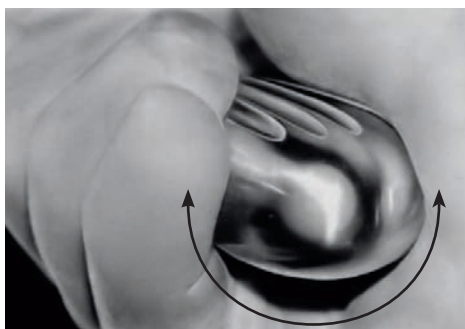
The Lussatore is inserted vertically between the wisdom tooth and the 2nd molar pushing it firmly to the level of the gingival tissue.
La leva viene inserita verticalmente tra il dente del giudizio ed il secondo molare premendo fermamente sino al livello del tessuto gengivale.



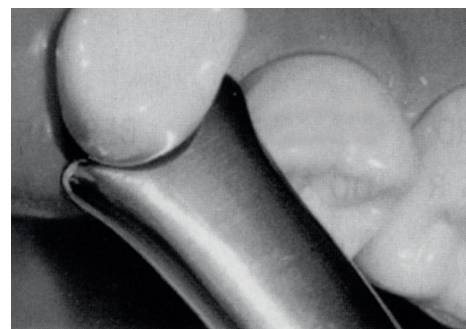
The tooth is dislocated on distal direction and lifted out of the alveolus.
Ruotando la leva perpendicolarmente al suo asse la forza di lussazione in direzione distale solleva il dente dal suo alveolo.



727/50
mm 160



The 2nd molar must not be used as the lever point for the instrument during the luxation of the wisdom tooth.
È molto importante non usare il secondo molare come punto di forza d'appoggio per far leva, lo strumento deve essere usato con forza di rotazione in direzione distale.



Good overview due to elegant access; quick and efficient working; good and controlled guidance of the instrument due to ergonomically designed handle and support recesses on the working end; soft tissue is not crushed; the alveolar bone is not damaged; reduced risk of root fractures.

Questa leva particolare permette di eseguire l'estrazione in modo rapido e razionale, grazie ad una buona vista del luogo d'intervento; inoltre riduce il rischio di frattura della radice, non danneggia l'osso alveolare ed i tessuti molli.



EXTRACTION SET
SET PER ESTRAZIONI



680/Set

Contains: 2164
800/5-6
720/27-28
726/mm 2-2,5-3-3,5-4-4,5
Set root elevators
Set leve



682/Set

Contains: 720/9-10-11
785/12R-12L
Set root elevators
Set leve



2900/Set

Contains: 878-1743/TC-3511/TC
2500/79-51-67-33L-88
720/10-8-11

For upper/lower molars-wisdoms
Molari superiori/inferiori-giudizio



684/Set 11 pcs

Contains: 680/1-2-3
690/3-4-5-6
700/8-9-10
852/HP3



686/Set 9 pcs

Contains: 798/1-2-3
795/1-3-4
796/1-2-3



SYNDESMOTOMES

SINDESMOTOMI



1651/OTT

1651/MN

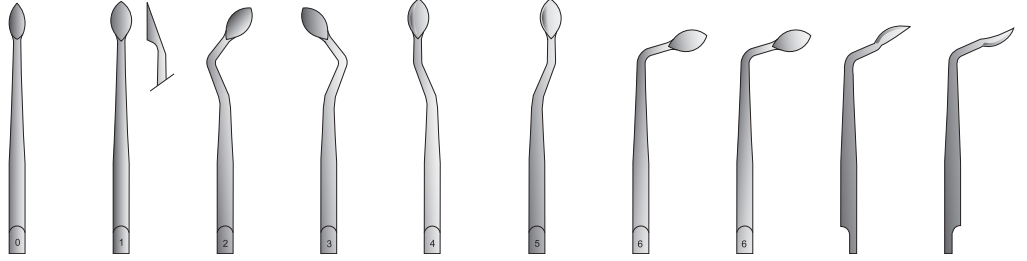


Fig. 0

Fig. 1

Fig. 2

Fig. 3

Fig. 4

Fig. 5

Fig. 6

Fig. 7

Fig. 8

Fig. 9

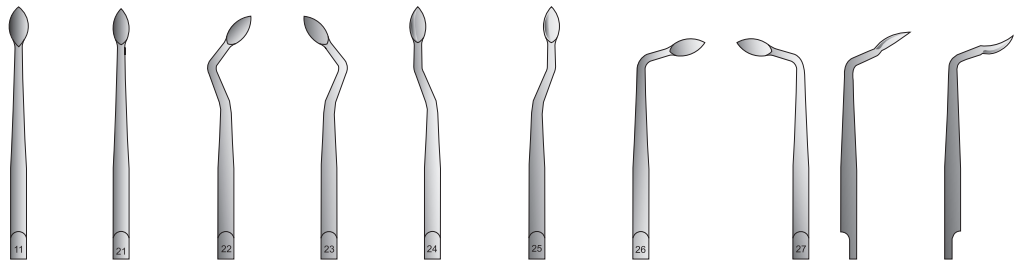


Fig. 11

Fig. 21

Fig. 22

Fig. 23

Fig. 24

Fig. 25

Fig. 26

Fig. 27

Fig. 28

Fig. 29

Full set composed of 20 interchangeable tips and 1 handle.
Serie completa di 20 punte intercambiabili e 1 manico.



1651/Set

SYNDESMOTOMES

SINDESMOTOMI



SYNDESMOTOMES CHOMPRET



1655/1 RS
Straight
Retto

1655/2 CB
Curved
Curvo

1650/1
Chompret

1650/2
Chompret

1650/3
Chompret
Faucille

1650/4
Chompret
Faucille

PERIOSTEALS

SCOLLAPERIOSTEI



880
Willinger
mm 155

881
Willinger
mm 155

876/22
Seldin
mm 195

876/23
Seldin
mm 195

874/P1
Hopkins
mm 170

874/P2
Hopkins
mm 170

875/12 S
Bennett
mm 170